



M324 Sorbent Trap Analysis System

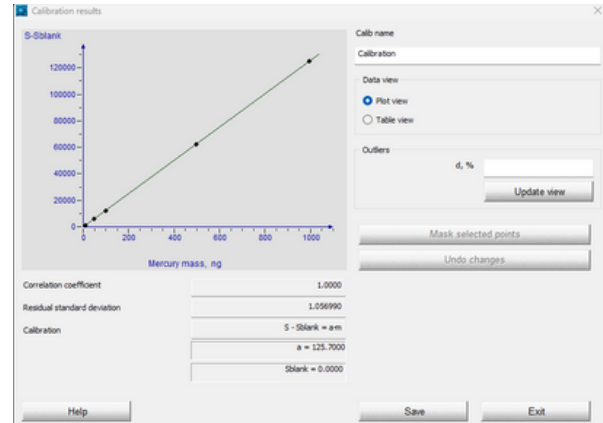
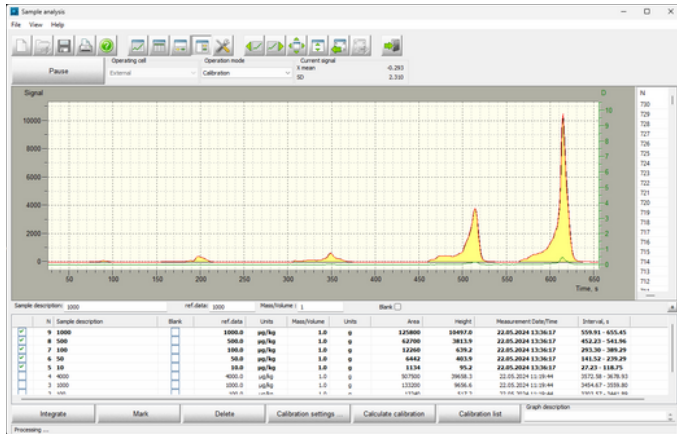
Direct interference-free analysis over a wide range of mercury concentrations



M324 Sorbent Trap Analysis System

A smart, reliable solution for mercury monitoring

For any facility currently required—or soon to be required—to measure mercury emissions, the combination of sorbent traps and the M324 is a proven, cost-effective alternative to traditional continuous monitors. With capital and operating costs significantly lower than CEMMs, the M324 is simple to use, easy to maintain, and trusted industry-wide. Ohio Lumex sorbent traps are custom-built to your stack conditions for unmatched accuracy and sensitivity. This is the only system capable of reliably measuring ultra-low mercury levels ($<0.5 \mu\text{g}/\text{dscm}$), making it future-ready for tighter regulations.



Key Advantages

- ▶ Low capital and operating costs compared to CEMMs
- ▶ Proven, mature technology used across multiple industries
- ▶ Easy to operate and maintain—most users change traps weekly
- ▶ Custom sorbent traps optimized for your specific stack conditions
- ▶ Accurate, sensitive detection even at $<0.5 \mu\text{g}/\text{dscm}$ mercury levels
- ▶ Ideal primary system for compliance or backup during CEMM downtime
- ▶ Supports RATA and pre-RATA testing
- ▶ Verifies calibrator performance and aids in CEMM troubleshooting
- ▶ Enables speciation studies with speciation sorbent traps
- ▶ Assesses mercury levels in coal, ash, and other materials
- ▶ Helps optimize sorbent injection systems
- ▶ Fast and flexible—RATAs typically completed in under one day



Principal of Operation

The Ohio Lumex Sorbent Trap Mercury Analyzer is the industry leader in sales, reputation, and regulatory compliance—widely used for Method 30B and PS 12B. It features a unique atomic absorption spectrometer with Zeeman background correction, eliminating the need for catalysts, gold amalgams, drying tubes, or compressed gases. Designed for both field and lab environments, it delivers rapid, interference-free analysis with unmatched ease of use and low operating costs.

Applications

- ▶ Mercury Determination in ALL types of solid and liquid samples
- ▶ Method 30B Sorbent Traps
- ▶ Performance Specification 12B Sorbent Traps
- ▶ Hg Speciation Sorbent Traps
- ▶ Coal, slurry, fly ash, gypsum
- ▶ Wastewater
- ▶ Environmental Studies

Methods

- ▶ EPA Method 30B
- ▶ EPA Performance Specification 12B
- ▶ EPA Method 7473 (SW – 846)
- ▶ ASTM 5964

Best choice for EPA Method 30B and PS12B

Specifications

Detection limit	0.2 µg - 30,000 µg
Precision	+ -2%
Analysis time	Results in 90 sec +
Calibration	Mercury NIST traceable Standard Referenced Materials
Set-up/take down time	Less than one hour (in the field)
Utilities	100v/60Hz, 1000 Watt
Dimensions	RA-915M: 18 1/2" x 4 1/3" x 8 1/4" Furnace pump-station box: 12 1/4" x 11 1/2" x 6 3/4" Furnace attachment: 9 1/2" x 6 1/2" x 3 x 1/2"
Total weight	94 lbs

Features & Benefits

- ▶ Analyze samples from 0.2ng/g (0.2ppb) to 30,000,000ng (30,000ppm)
- ▶ Most samples take ~ 90 seconds to analyze (high-level samples take 8-11 minutes)
- ▶ Since the system doesn't require a catalyst, gold amalgam, or drying tube, the analyzer is not prone to damage from high-level or halogen-containing samples
- ▶ Rapid, interference-free measurement with no sample prep
- ▶ Wide dynamic range, ideal for compliance testing and RATAs
- ▶ Direct analysis of entire trap section, including glass wool
- ▶ Matrix independent with no memory effect
- ▶ No need for a cleanroom or hood—exhaust is scrubbed internally
- ▶ NIST-traceable calibration ensures data accuracy and audit readiness
- ▶ Compact, rugged design—portable for field use, reliable in labs
- ▶ Real-time software allows on-the-fly adjustments for unusual samples
- ▶ Easy operation with a short learning curve—training and certification in one day
- ▶ No use of concentrated acids or toxic chemicals
- ▶ Low maintenance and operating costs



30350 Bruce Industrial Pkwy.
Cleveland, OH 44139

+1 440 264 2500 office
+1 888 876 2611 toll free
+1 440 264 2501 fax
www.ohiolumex.com

